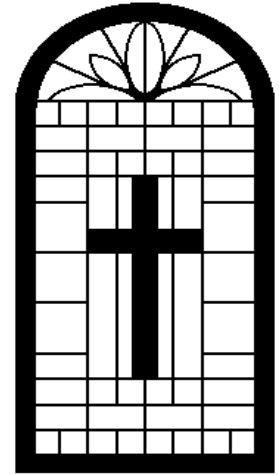


# Thru the Windows



## New Congregational Council Members Elected

Thanks to all of you that attended the budget forums, and the one-service Sunday and annual meeting on January 25th. We had 107 voting members in attendance at the meeting. Children enjoyed Family Worship Day and activities that followed. Then we all joined in fellowship for a delicious and highly-attended potluck luncheon. The 2009 proposed budget was approved along with two amendments presented by the Music and Worship Committee. Your attendance and preparations made for an efficient and productive meeting!

We are delighted to welcome new council members:

Wayne Andersen, Jan Braden, Emily Laaker, Dave Sandstedt, Jr., Deb Almquist, Di Loptin, Mary Pat Schmidt, and Chris Tomjack, as they join the team along with existing members Scott Pierson, Dana Tompkins, Jim Pinegar, and John McClelland.

## Outgoing Officers

Ecclesiastes 3: 1– 14 represents the wise voice of Solomon reflecting on the times and seasons of our lives. In line 12, (*I know that there is nothing better for men than to be happy and do good while they live*), I am reminded of the steadfast work of three men in our congregation. Mark Backhuus, Bill Dunn, and Mert Opfer worked diligently on the Congregational Council over the past three years. Each of these disciples served as officers for the congregation. Mark was past treasurer, Bill was past vice-president, and Mert was past president. Their extra time, talents, and dedication to serving the Lord was abundant this year as they helped to prepare the way for our new pastor. THANK YOU Mark, Bill, and Mert for the toils and hard work, we truly appreciate you!

## FEBRUARY 2009

**Mark the Calendars**  
Ash Wednesday Services starts the Lenten season on February 25th at 10am and 7 pm. Followed by Weekly Lenten Services Wednesdays at 7:00 p.m.

**FOR QUESTIONS ABOUT THIS PUBLICATION, CONTACT THE CHURCH OFFICE**

Monday—Friday

8:00 a.m.—4:00 p.m.

Phone 402-238-2483

[www.stjohnsbennington.org](http://www.stjohnsbennington.org)

Email: [stjohnsoffc@msn.com](mailto:stjohnsoffc@msn.com)

## Reverend Clay Skurdahl Shares

For Lutherans the 40-day season of Lent is an important one. But what is Lent? Though the Scriptures do not mention Lent, it has a longstanding tradition in the Church. It began very simply as a time of preparation for Easter. From the earliest times it was customary for Christians in most places to fast before Easter (or the *Paschal Feast*). At first this was a 2-day fast (Friday and Saturday). As time passed, this fast was extended to a week. By 350 A.D. the 40-day fast that we now have was already in vogue. (Sundays are excluded to preserve the number 40).

For Christians living in the Fourth Century, Lent had two major emphases:

1. It was seen as a time of repentance and denial of self. All Christians were to examine their lives according to the Ten Commandments and other Christian ethics and repent where necessary. They were to remember what it cost their Savior to save them.
2. It was a time of instruction and preparation for the *electi*, i.e., those who wanted to become members of the Christian Church. They learned the Christian doctrine by studying the Creed. They were led step by step through prayer and special rites toward baptism. If they "passed" they were baptized and received the Lord's Supper in a joyous service either on Easter Eve (the Easter Vigil) or Easter itself.

At the time of the Reformation, some Christians wanted to eliminate Lent since Scripture didn't command it. Luther urged that it be kept, for he saw Lent as an opportunity for the strengthening of faith. "Lent, Palm Sunday, and Holy Week shall be retained, not to force anyone to fast, but to preserve the Passion history and the Gospels appointed for that season." Lent was to be preserved because it reminded Christians of the Passion (Suffering and Death) of Jesus and encouraged them to meditate upon it.

Lent gives us a wonderful opportunity for spiritual renewal. Through our midweek and Sunday services, our Bible studies, and Lenten devotional materials, we face that which hinders our walk with Christ. But even more profoundly, we hear most clearly the Gospel of Jesus who forgives and removes our sin and gives us the power to live anew. May we practice the disciplines of Lent. They help relate us to Jesus and his Gospel. There is nothing like it to find spiritual renewal.

Lent begins on Ash Wednesday, February 25, with St. Paul's encouragement: *"We beseech you on behalf of Christ, be reconciled to God. For our sake he made him to be sin who knew no sin, so that in him we might become the righteousness of God. Working together with him, then, we entreat you not to accept the grace of God in vain. For he says, "At the acceptable time I have listened to you, and helped you on the day of salvation. Behold, now is the acceptable time; behold, now is the day of salvation."*

**Ash Wednesday February 25<sup>th</sup>:** "The Call to Spiritual Renewal"

**March 4<sup>th</sup>:** "Listening to God"

**March 11<sup>th</sup>:** "Welcoming and Including"

**March 18<sup>th</sup>:** "Expanding our Prayer life"

**March 25<sup>th</sup>:** "Christian Service"

**April 1<sup>st</sup>:** "Enriching Worship"

**Maundy Thursday April 9<sup>th</sup>:** "Living Love in Community"

**Good Friday April 10<sup>th</sup>:** "The gift of Love"



*God's Grace and Peace, Rev. Clay*

## Director of Ministry Shares

Do you remember turning “sweet 16”? Perhaps you were eagerly awaiting the idea of a newfound freedom, car keys, and some sort of release from the authoritative or smothering parents. Perhaps you welcomed the thrill and risk of getting behind the wheel, or welcomed the uncertainty of wondering “where should I go”?

Our oldest child turned 16 last month. And, my, did we have flashbacks! I particularly remember one foggy spring morning when I rolled out of bed and into my 1989 maroon Mercury Cougar at about 6:30 a.m. There was a thick fog.... Have you heard that most accidents happen within five miles of a person’s home? It is true, most likely because we get so comfortable with our routine that we do not pay attention to signs or uncertainties. Well, God was at work that morning as I skidded to a sudden halt two feet *beyond* the stop sign crossing a major highway. As I stopped and looked to my left, I felt the turbulence of the 18-wheeler shake my car. I remember thinking, “well that was close, wonder what made me stop”. Then, that was it, on with my adolescent life. Years later, at another sudden halt, the Holy Spirit reminded me of that experience. I began to look back, connecting the dots of various halts (and detours), and praising God for His saving graces.

Throughout our lives, we come to sudden halts again and again. Such halts may take the form of close-calls, car crashes, illness, death, divorce, job loss, financial strain, marriage, birth, or newfound independence. Each of these halts leads us to ask the question: “Now what?” When you are faced with such a question, I encourage you to pray! Talk to God and He will guide you, just as a parent would guide a young child.

During this Lenten season, please make time to reflect and ponder the question “Now What?” for our lives here at St. John’s. What will we do to recognize the Lord’s great works? How will we share love with each other through the church? *God is faithful, just, gracious, and compassionate, and He has caused His wonders to be remembered* (Psalm 111). He loves each one of us in amazing and indescribable ways. Let Him work through you today. Invite Him to be your newfound freedom!

*Pray for St. John’s, Heather*

*Psalm 111:2  
Great are the  
works of the  
Lord; they are  
pondered by all  
who delight in  
them.*

### 2009 CHURCH COUNCIL

Scott Pierson	President
John McClelland	Vice President
Deb Almquist	Treasurer
Wayne Andersen	Financial Secretary
Jim Pinegar	Secretary
Jan Braden	
Emily Laaker	
Di Loptin	
Dave Sandstedt, Jr.	
Mary Pat Schmidt	
Chris Tomjack	
Dana Tompkins	

### CHURCH STAFF

Interim Reverend	Rev. Clay Skurdahl
Director of Ministry	Heather Goertz
Office Administrator	Debbie Misfeldt
Director of Youth Ministry	Sharee Maki
Organist	Michael Bauer
Accompanist	Jan Braden
Choir & Jr. Choir Director	Kerry Frey
Pre-school Director	Nicki Nutter
Bookkeeper	Gail Pfahl
Custodians	Tom & Cindy Koziol

## BYG News

### Director of Youth Ministry Shares

Wanting to learn a thing or two about Paul? Ask a teen who attends BYG (Bennington Youth Group) on Sunday evenings! We've spent the month of January studying the life of Paul, learning some historical facts about his time in Rome, but more importantly learning of his complete dependence on God to help him teach the people he ministered to (and us!) what it means to be sold out for our savior and live our lives accordingly.

We've started a small group Bible study on Wednesday evenings and have all been blessed by the "Gospel Journey" we're on. We're learning how to express our faith to those who don't believe in Christianity in a way that may bring them to know the God who loves them.

Parents will have the opportunity to hear advice from renowned relationship experts Drs. Les and Leslie Parrott through a "Parenting Your Teenager" study we're beginning in February. Please see the note at the bottom of this page for details!

We're gearing up for more great things at BYG, hoping to attend an awesome concert in March and do some more fun things as a group. The National Youth Gathering participants are planning fundraisers, so be watching for a movie night, some raffle ticket sales, a "Dollar a Door" drive and more, and please help support their desire to serve and worship in New Orleans through financial contributions and prayer!

Don't let anyone look down on you because you are young, but set an example for the believers in speech, in life, in love, in faith, and in purity.

*1 Timothy 4:12*

### Confirmation News

God continues to move in the hearts and minds of our Confirmation students! After blessing the community in the bitter cold with our voices singing Christmas carols, then taking a break to celebrate the Christmas season with our families, we've now moved from picking apart and studying the Apostle's Creed to looking at Lutheran Life, what we as Lutherans believe regarding Baptism and Communion. Some of our insights on how to answer the call to "Go make disciples" are shared on the bulletin board in the hallway. Next, we move on to studying the Lutheran worship service and why we do the things we do on Sunday mornings, all before we head into Lent.

We have some excited young would-be musicians that may soon be getting together for some guitar and drum lessons taught by a young man with a passion for music and youth and a profound love of God, with the hopes that eventually they will take their new talents into Sunday morning services and turn them into praise, something they have felt called to do since returning from their Recharge retreat at Okoboji!

### Attention: Parents of Teens or Pre-teens:

Beginning on Feb. 22 and continuing through March 29 at 9:30am in the conference room at St. John's, you have the opportunity to join us for "Parenting Your Teenager: A Biblical Look at Parenting". Topics are relevant to parents today and include, but are not limited to, "controlling your teen's anger" and "teaching your personal faith". We're very excited to offer this course for a \$15 donation per person or couple as Caryn Stitchler guides us through the DVD lessons presented by Drs. Les and Leslie Parrott. Please reserve your spot by calling Sharee Maki by Feb. 15!

*Be Blessed, Sharee Maki*

## Kid's Kingdom Christian Preschool News

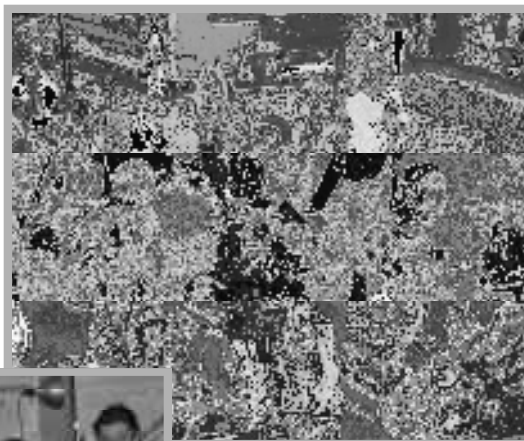
The holidays were wonderful at Kid's Kingdom! Our families enjoyed the preschool Christmas program on December 11th, and the children enjoyed their classroom celebrations of the birth of Jesus! Ms. Heather held chapel time in the sanctuary and brought the Christmas story alive for the children. Preschool chapel gives the children opportunities to experience other areas of the church while learning new words such as: Christ candle, disciple, Bible, and altar. One of the most exciting moments was when the children were able to answer the question "Where does Jesus live?", by answering "in our hearts".

Many wonderful cards were sent to Ms. Meghan and I expressing appreciation to the church for bringing the preschool to the community. Thank you St. John's! We are blessed to be bringing the love of Christ into the lives of so many little ones here in the Bennington community. The demand for quality early childhood programming continues, and we have added an afternoon class on Tuesday and Thursdays to accommodate the demand and continued growth. We began our year with just 18 students, and now have 39.

If you know of a new family in the church or community, please let them know where we are! We'd love to fill the halls with the sounds of children laughing and learning. Priority registration for the fall of 2009 is now open to church families and those who are currently enrolled. If you are a member of St. John's church and have a little one who will be three by October 15th, 2009, please call the preschool office to arrange a tour. We'd love to show you around the space and tell you about our program. Office hours are 9:00 to noon, Monday through Friday. Classes are available for three through five year olds, both mornings and afternoons.

**Preschool  
registration  
for fall 2009  
starts now!**

*Respectfully submitted,  
Nicki Nutter, Director*



**Kingdom Quest  
Sunday School  
children  
learning about  
Jesus and loving  
it!**



## Kingdom Quest Sunday School News

### Happy New Year!

Kingdom Quest is off to a great start this new year. The children in our Pre-K through 4<sup>th</sup> grade are learning about the life of Jesus and how to grow closer to him. Our 5<sup>th</sup> & 6<sup>th</sup> graders have started the journey of learning about each of the Ten Commandments. These lessons will continue until the end of March. We are excited about sharing these lessons with your children. Thank you for bringing them to Kingdom Quest every Sunday. We also welcome Melissa Johnson to our Kingdom Quest family. Melissa is our new Queen Quest and will be leading the large group presentations for the 1<sup>st</sup>-4<sup>th</sup> grade children.

### Hearts of Hope Campaign

Every February, the Kingdom Quest children raise money for the Open Door Mission through their Hearts of Hope Campaign. During this month, we are asking the children to bring in quarters that they would like to donate to help feed, shelter, and clothe those who are homeless or near homeless. What a great way to show God's love for those who are in need.

### Vacation Bible School

We are forming our Vacation Bible School planning team. If you would like to be a member of this team, please contact Sonya Tompkins at 292-8430. It's a great time of getting to know others while planning for a great week of sharing God's love with the children.

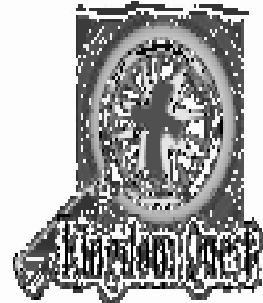
### Thank You!

The Kingdom Quest task force would like to thank all those who helped with our Christmas program...the planning team, Exultation, Jan Braden, Julie Rothermund, Eileen Baker, Ryan Baker, Fred Barnhard, the KQ Shepherds, Sharee Maki, the Youth Group, and the parents. The children did a great job and we are so very proud of them.

Kingdom Quest received a gift of \$150 from Thrivent Financial for Lutherans in December. The gift was used to purchase some items for the Christmas season and musical instruments for the children to use during the closing song at the 11:00 worship services. Thank you Thrivent!

We would like to thank Dr. Heather Goertz for her service to Kingdom Quest as Queen Quest these past 2 ½ years. You have been a blessing to Kingdom Quest and the children. Your spirit is contagious.

Thank you Kingdom Quest Shepherds for teaching the Scriptures to our children. You are truly wonderful!



We welcome all children 3 years old through 6th grade to join us for Kingdom Quest Sunday School every Sunday from 9:30-10:45 in the lower level. We encourage parents to bring their children between 9:20 -9:25 so that we can begin promptly at 9:30. We hope to see you on Sunday!

**Revin' Up For Jesus!**

# St. John's Women in Action

## Coming Events

**Fair Trade Sales**

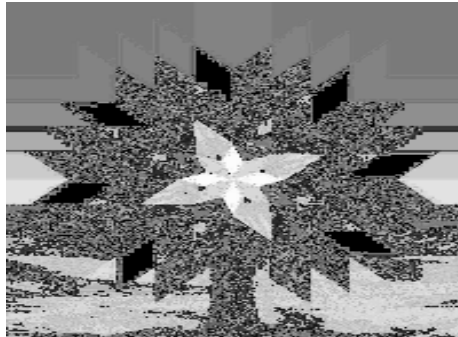
February 8th  
in Narthex between services  
Coffee, Tea, Cocoa,  
Hot Chocolate, Nuts  
and Chocolate Bars

**Spring Gathering**

February 28<sup>th</sup>  
Luther Memorial Lutheran  
Omaha, NE

**World Day of Prayer**

March 6<sup>th</sup>  
2:00 p.m.  
Featured country is  
Papua New Guinea.  
Everyone is invited.



**Spring Gathering**

February 28<sup>th</sup>  
Luther Memorial Lutheran Church  
Omaha, NE  
Cost \$15.00  
Registration Deadline Feb. 18  
See Emily Laaker, Karen Anderson,  
or check the bulletin board if you  
need a registration blank.

## Bible Study

**All Women are Welcome!**

***Faith Circle Bible Study***

February 10, at 1:30 p.m.  
Fellowship Hall  
*Lesson Leader*  
Lorene Andersen  
*Refreshments*  
Betty Deardoff

***Rejoice Circle Bible Study***

February 16, at 7:00 p.m.  
Conference Room  
*Lesson/Refreshments*  
Emily Laaker

**Be FIT**

**Faith Intensity Training**

A women's exercise class  
begins in February. This  
training uses faith to  
guide us through an  
intense physical fitness  
program. For info,  
contact the church office.

***World Day of Prayer*** is a worldwide ecumenical movement of women of many faith traditions who come together to observe a common day of prayer each year on the first Friday in March. Each year a different group of women selects the theme and prepares the service.

Join us on March 6<sup>th</sup> at 2:00 p.m. for a prayer service that was created by the women of Papua New Guinea. The theme this year is "In Christ, There Are Many Members Yet One Body".

We will meet in the sanctuary for the prayer service and then adjourn to the Fellowship hall to enjoy refreshments and to see artifacts from that country brought back by Karen Anderson's sister.

***Young Women of the ELCA – BE BOLD***

*Check out this website! [www.boldcafe.org](http://www.boldcafe.org)*  
*Café is a free, monthly on-line magazine for young women offered by Women of the ELCA. Women of all ages are reading it!*

***Café stands for***  
***Community Advocacy Faith Enlightenment***

## Quilters in Action

God's valentine to you is His Son. Your valentine to God is the love that grows from his faith in Jesus.

*Whoever believes in the Son has eternal life.—John 3:36*

When will you ever learn that “believing “ is useless without doing what God wants you to do? Faith that does not result in good deeds is not real faith. James 2:20

Faith is active. It's not passive. It's a commitment. Look at your lifestyle and see what kinds of action follow as a result of it. If you've got the real stuff, faith can be demonstrated.

On January 12, 2009, the following six ladies met: Sarah Misfeldt, Addie Backhuus, Emily Laaker, Suzanne Kirby, Lorene Andersen, and Betty Deardoff. In spite of the inclement weather that came in quickly after lunch, we were able to complete six baby quilts and three full size quilts. Quilting was cancelled for Tuesday morning not knowing what weather and roads were going to be like.

Just a reminder, we are having a salad buffet on the Monday we quilt all day. Participants bring a small salad to share with others. We also, invite all others to come and join us, we not only make quilts but we have fantastic fellowship with one another. Also, we can use fabric. Please continue to donate fabric for us to make quilts for others.

### Quilter's Prayer

Lord, we thank you for this work you have given us to do together. We pray you give us the grace to persevere in it and through it to serve you and those who are hurting.

Comfort and strengthen those who receive these quilts. All honor and glory is yours in Jesus' name.

### Sweetheart Tea at Good Shepherd Home

Everyone is welcome to attend the Sweetheart Tea on Saturday, February 7 from 2:00-4:00pm in the main dining room of the Good Shepherd Home. Wayne Miller will be entertaining with music from 2:30-3:30pm. This event is in honor of Valentines Day.

### Social Ministry's Card Ministry

*So you say it's your Birthday?* How about those homemade cards that you will be receiving in your home mailbox this year? The Social Ministry Team believes that relationships are key to the outreach ministries of St. John's and wants you to know that we are here for you. On your birthday, and special occasions, you should receive a personalized note from us!

Would you consider being a Card Ministry Sponsor? Sponsors are asked to give a donation to fund the expenses of the card supplies and postage for the month of their birthday or anniversary. We will then be glad to recognize the sponsor on the back of each card that is sent out.

## Serving Christ through Mission Work

### Consider a Trip to Tanzania

You are invited to visit our companion synod in Tanzania! As we continue to deepen our relationship with the Northern Diocese of the Evangelical Lutheran Church in Tanzania, two Nebraska Synod-sponsored trips to Tanzania are planned for 2010: Feb. 1-16, 2010 AND July 13-28, 2010

Estimated costs range from \$3,600 (February Trip) to \$4,350 (July Trip) which covers all airfare, transportation, meals, safari fees, and visas. The trip includes visits to ministry sites of the Northern Diocese as well as a safari to the Serengeti and Ngorongoro Crater. These trips flow from the relationship we share with our companion synod in Tanzania. The companion synod program enables the Nebraska Synod to experience the gifts and witness of the Northern Diocese of the Evangelical Lutheran Church in Tanzania.

Interested? Please contact Pr. Martin Russell or Stephanie Lusinski in the Nebraska Synod office (402.896.5311). Space is limited.



Jakson's House is Back...No, it didn't go anywhere, there just hasn't been news to report for a while. The outside of the house is nearly complete but is at a standstill—just waiting for some warm Saturdays. The only souls brave/hardy enough to work inside during the last few weeks have been the Smith's—getting the electrical work wrapped up. Since that's nearly complete, quite a bit will happen in the next 90 days. Within a month the insulation and sheetrock should be done. Next the cabinets will go in followed by trim and paint. Countertops and tile will be installed just before the final plumbing, electrical, and heating/air conditioning. We'll then just have hardware and flooring on the inside with a few things such as gutters, concrete, bricks, and the back porch on the outside.

The budget still looks to be in good shape (though we are applying for some grant funds to pay for the installation of the elevator and backup generator). Warmth is all that's needed: the heat on the inside and spring on the outside.

Thank you for your continued prayers and support!

#### What shall I give Him poor as I am?

Please consider serving as a disciple with St. John's during 2009! There are many opportunities to serve. What are your strengths and talents? What do you enjoy doing in your spare time? If you are short on spare time, there are others ways to be involved right from your own home. If you are being led to serve in this church somehow, please call or email [drheathergoertz@yahoo.com](mailto:drheathergoertz@yahoo.com).

#### Fundraiser for Bennington High School

##### Post Prom

Join us Saturday, Feb 7, at 5:00 at the high school for homemade cabbage burgers (runzas) to support Post Prom. \$5.00 for the meal and 3.50 for frozen burgers to go. Tickets are available in advance from Bill Weidner at 498-8315. Walk ins welcome.

*Please help Keep Our Kids Safe!*

## Service Opportunities

Please contact the church office if you are able to assist with the below requests.

### WHEELS 4 CHRIST

Wheels 4 Christ is in desperate need of additional volunteer drivers to help provide needed transportation to those in our congregation & in our community. These volunteer drivers are needed, usually between 7:45 am and 4 pm daily, Monday thru Sunday for no more than three hours at a time. A church owned and insured car is available to provide the transportation. Please contact Bill Dunn, Operations Manager @ 238-2659 or Clancy Laaker, Committee Chair @ 238-2583 if you are available on an emergency basis or you would like to be an occasional driver. This is an AWESOME Ministry of our congregation and meets a very important need.

### WEDDING MINISTRY

Did you know that there is no hot water available in the altar room? Every time that it is needed, it has to be heated in an old coffee pot. The wedding coordinators, along with the help of Thrivent, would like to remedy that. We will be sponsoring the coffee fellowship on Sunday, March 8 to raise funds for a water heater. If you can't make it to the fellowship hour, please consider making a special donation and marking it "WATER HEATER". Thanks for your help in getting this project completed!

### Greeter/Ushers Needed

The Kingdom Quest Task Force is looking for families that are interested in serving as greeters and/or ushers during the Lenten season. The children enjoyed helping as ushers and greeters at the Christmas service. This would be a great opportunity for the children and their families to serve together. There will be someone to assist you with any questions you have as ushers and greeters. Thank you for prayerfully considering serving during Lent. Please contact Stacy Brown at 238-3147 or Stacy.Brown@nngco.com.

### *Please support the Western*

#### *Douglas County Food Pantry*

*Place items in the shopping carts located in the lower level entry and fellowship hall entry*

Exercise equipment, weights, fitness balls, and yoga mats (new or used) are needed for a women's fitness program at St. John's.

### **We're Thirsty!**

The youth house is in need of beverages (pop, water, sports drinks) for youth activities—please consider donating items by bringing them to the church office.



**Campbell's Soup Labels** are being collected and can be put in the box below the church mailboxes.

### HEALTH MINISTRY

Health Care providers are needed to continue our Parish Care Team within St. John's to help people with various health care needs & programs.

Please notify the office if you could serve on this team.

## Joys and Concerns

- ♥ Special thanks to our “family” at St. John’s for their love, support, prayers, and concern during December. Losing both fathers/grandfathers within a two week period certainly dampened our Holidays last month. But we are so appreciative of all the hugs and best wishes during this trying time. Special appreciation to those who stepped in to fill in for Jan during the Christmas Eve services! We Love and Appreciate our wonderful St. John’s family! Blessings!

*Jan, Kevin, Mike & Matt Braden*

- ♥ Prayers of thanksgiving to Derik and Tricia Knock on the birth of their daughter, Madyson FaithAnn born January 6.
- ♥ Thank you to the 2009 Nominating Team for their steadfast work in recruiting candidates for Council. We appreciate you: Wade Junker, Greg Stichler, Dick Fritz, Jan Braden, Mary Pat Schmidt, and Bev Thomas.
- ♥ Altar flowers were given on January 18 by the children of Duane and Helen Braesch in honor of their 55th wedding anniversary and Duane’s 75th birthday.
- ♥ Prayers of comfort and sympathy to the family of Lenora Klabunde. Lenora was called home on January 2. The funeral service was held at St. John’s on January 6. Interment was at Flower Hill Cemetery.
- ♥ Prayers of comfort and sympathy to Sheri, Jim, Nick, and Chelsi Pinegar as Sheri’s father, Glenn Hawley, recently passed away. Funeral services were held on January 27 at West Center Chapel. Interment was at Evergreen Memorial.
- ♥ Thank you to the Confirmation students, Leanna Flynn, Seth and Molly Krivohlavek Sharee Maki and family for the childcare they provided during the annual meeting on January 25th. The children had a great time and we all appreciate your spending time with them.

*The Kingdom Quest Task Force*

### Christian Fellowship Club

On Sunday, February 8, the CFC will view the “Chocolate” exhibition at the Durham Museum. Afterwards, at approximately 4pm, dinner will be enjoyed at Spaghetti Works. If you would like to carpool to this event, please meet in the east parking lot of the church at 12:30pm. Please RSVP by February 2 to Jane Frost at 571-2820 or Leanna Flynn at 238-2933.

## Church Office Hours, Due Dates & Such

Please help our office to be as efficient and helpful as possible by keeping the following in mind:

### Monthly Publication: Thru the Windows

The due date for information for the monthly newsletter, “Thru the Windows,” is the 15th of each month. Any articles or information after that date will go into the next month’s newsletter. Please submit all articles to [dmsfeldtsjlc@msn.com](mailto:dmsfeldtsjlc@msn.com)

### Office Hours

Monday through Friday are 8:00am-4:00pm. The church staff meets at 9:30am on Tuesdays. Usually there are volunteers to answer the phones during that time. If not, the phone will go to voicemail. Occasionally, the staff will have lunch offsite on Tuesdays so please call before coming to make sure we are here. If you need access to the church at other times, please call and we will work with you to make other arrangements.

### Voice Mail & E-mail

All voicemail & email messages will be answered as soon as possible. Messages left after 4:00pm on Friday will be returned on the next business day.

# February 2009

SUN	MON	TUE	WED	THU	FRI	SAT
<p>1</p> <p><b>8:30</b> Worship (with Holy Communion)</p> <p><b>9:30-10:45</b></p> <p>Kingdom Quest</p> <p><b>9:30</b> Coffee/Rolls</p> <p><b>9:30</b> Social Ministry</p> <p><b>11:00</b> Contemporary Worship (communion)</p>	<p>2</p> <p>7:00pm</p> <p>Evangelism</p>	<p>3</p>	<p>4</p> <p>9am Over 60</p> <p>5pm Jr. Choir</p> <p>6:30pm Confirmation</p> <p>7:00pm Chancel Choir</p> <p>7:30pm BYGs</p> <p>8:00 Exultation</p>	<p>5</p> <p>10:30am</p> <p>New Beginnings</p>	<p>6</p> <p>6pm-8pm</p> <p>Girl Scouts</p>	<p>7</p>
<p>8</p> <p><b>8:30</b> Worship (with Holy Communion)</p> <p><b>9:30-10:45</b></p> <p>Kingdom Quest</p> <p><b>9:30</b> Engaged Couples Mtg</p> <p><b>11:00</b> Contemporary</p> <p><b>12:15</b> Music/Worship Mtg</p> <p><b>12:30</b> CFC Outing</p> <p>2:00 Court of Honor</p>	<p>9</p> <p>9:00am</p> <p>Quilters (all day)</p> <p>6:00 4-H mtg LL</p>	<p>10</p> <p>9:00am Quilters (half day)</p> <p>1:30 Faith Circle</p> <p>7:00 Council Mtg</p>	<p>11</p> <p>9am Over 60</p> <p>5pm Jr. Choir</p> <p>6:30 Confirmation</p> <p>7:00 Chancel Choir</p> <p>7:30 BYGs</p> <p>8:00 Exultation</p>	<p>12</p> <p>9:30am</p> <p>Premier Club FH</p>	<p>13</p> <p>3:30pm-5:00pm</p> <p>Mom's Club LL</p>	<p>14</p> <p>7:15am</p> <p>Mens Ministry Breakfast</p> <p>12:00</p> <p>Baby Shower LL</p>
<p>15</p> <p><b>8:30</b> Worship (with Holy Communion)</p> <p><b>9:30-10:45</b></p> <p>Kingdom Quest</p> <p><b>9:30</b> Coffee/Rolls</p> <p><b>9:45</b> Thrivent</p> <p><b>11:00</b> Contemporary Worship (communion)</p>	<p>16</p> <p>12:00</p> <p>Keenagers</p> <p>7pm Rejoice Circle</p>	<p>17</p>	<p>18</p> <p>9am Over 60</p> <p>5pm Jr. Choir</p> <p>6:30pm Confirmation</p> <p>7:00pm Chancel Choir</p> <p>7:30pm BYGs</p> <p>8:00pm Exultation</p>	<p>19</p> <p>10:30am</p> <p>New Beginnings</p>	<p>20</p>	<p>21</p> <p>10:00—11:30</p> <p>Girl Scouts LL</p>
<p>22</p> <p><b>8:30am</b> Worship (with Holy Communion)</p> <p><b>9:30-10:45</b></p> <p>Kingdom Quest</p> <p><b>9:30</b> Coffee/Rolls</p> <p><b>9:30</b> Engaged Couples Mtg</p> <p><b>9:30</b> Parenting Your Teen Bible Study</p> <p><b>11:00</b> Contemporary</p> <p><b>12noon</b> Wedding Shower</p>	<p>23</p> <p>4p-6pm Girl Scouts cookie delivery LL</p>	<p>24</p>	<p>25</p> <p>9am Over 60</p> <p>5pm Jr. Choir</p> <p>10am/7pm</p> <p>Ash Wednesday Services with Holy Communion</p>	<p>26</p> <p>7pm Kingdom Quest Mtg</p>	<p>27</p>	<p>28</p>

## FEBRUARY BIRTHDAYS

2	James Tompkins Sarah Tompkins	Stacy Laue Dawn Metcalf
3	Janice Braden Julie Omer Shelby Arp	20 Sonny Schmidt Sheri Crawford Rob Loptin
4	Karla Backhuus	21 Linda Book
5	Carole Cox Robert Frahm Lauren Circo Natalie McClelland	22 Chris Circo Jodi Grothendick Grant Lurvey Jadyn Tomjack
6	Connie Timm David North, Jr.	23 Bethany Schmidt 24 Madison Dreessen
7	Tara Meador Michael Smith	Sue Goedeker Erynn Westfall
8	Adrienne Kuhl	Tricia Schneider
9	Roxanne Lenhartt Paul Pooley Troy Sass Sonya Tompkins	25 Jackie Weidner Matthew Turner Justin Kramer
10	Patrick Baker	27 Virginia Andersen Brenda Blacketer
11	Ryan Backhuus Michael Murphy	Peggy Spicka Helen Braesch
12	Michaela Bohn Nadine Frost Ken Jensen Kelsey Arp Dana Tompkins	28 Katherine Andersen Damon Miller Annette Kay
13	Hannah Misfeldt Ella Cox	
14	Darrell Logemann Mertin Opfer Derik Knock	4 Roland & Dorothy Sass 10 Michael & Lana Murphy 11 Robert & Janie Frahm 11 Marvin & Brenda Blacketer 14 Mike & Carol Iltzsch 22 Paul & Linda Holtapp 25 Howard & Phyllis Almquist 25 Dean & Deborah Slechta 26 Roy & Dorothy Eipperle 26 Bill & Dorothy Mohr 27 Tyler & Angie Schmidt
15	Grace Baty Andy Christensen	
16	Michelle Pierson Ronda Bourg	
17	Michele Reed	
18	Kacey Eggink Nancy Mohr	
19	Allison Junker David Bressman	

## FEBRUARY ANNIVERSARIES

## SPECIAL BLESSINGS TO:

Paul Pooley, 87  
Nadine Frost, 85

Paul & Linda Holtapp, 40  
Roy & Dorothy Sass, 53  
Howard & Phyllis Almquist, 58  
Bill & Dorothy Mohr, 60

## FEBRUARY SERVANTS

LECTORS	8:30	11:00
Feb 1	Mark Sukraw	Stacey Noble
Feb 8	Wade Junker	Chris Tomjack
Feb 15	David Mills	TBD
Feb 22	Julie Dunn	TBD
Feb 25	10am Julie Dunn 7pm Mark Sukraw	

## ACOLYTES

Feb 1	8:30 Zac Melvin, Nicole Japp 11:00 Hayden Renter
Feb 8	8:30 Zac Melvin, Paige Depperman 11:00 Derek Christensen
Feb 15	8:30 Gage Reed, Madison Pooley 11:00 Derek Christensen
Feb 22	8:30 Zac Melvin, Madison Pooley 11:00 Derek Christensen
Feb 25	7:00pm Zach Goertz, Nic Brown

## GREETERS

<b>8:30am</b>	
Feb 1, 15, 22	Mark & Karla Backhuus
Feb 8	Bill & Julie Dunn
<b>11:00am</b>	Curtis Family (entire month)

## USHERS

<b>8:30am</b>	
Feb 1	Wade & Allison Junker
Feb 8	Bill & Julie Dunn
Feb 15	David Clark, Addie Backhuus
Feb 22	Clark & Roth Families
<b>11:00am</b>	
Feb 1, 15	DiMauro & Pierson families
Feb 8, 22	Pierson family

## St. John's Lutheran Church

322 North Molley Street

Bennington, NE 68007

Reverend Clay Skurdahl, Interim

Dr. Heather Goertz, Director of Ministry

402-238-2483 (Church)

[www.stjohnsbennington.org](http://www.stjohnsbennington.org)

STJOHNSOFFC@msn.com

Insert Mailing Label Here

### Sunday Worship Services

8:30 Traditional with Holy Communion

11:00 Contemporary\*

\*Holy Communion will be celebrated on  
the First and Third Sundays

Sunday School for 3 year olds through  
6th grade meets weekly at 9:30 a.m.

# **St. John's Lutheran Church**

## **"The Place to Be"**

### **Lenten Services**

**February 25: Ash Wednesday 10:00 a.m. and 7:00 p.m.**

### **Coming in March**

**Weekly Lenten Services on Wednesday Evenings at 7:00 p.m.**

**Come early for weekly Soup Suppers starting March 4th.**

**Lenten Adult Bible Study**